

VF500/VF560

Fingerprint
Time Attendance &
Access Control Terminal



VF500/560 is a face identification time & attendance and **access control** terminal, which can connect with third party electric lock, door sensor, and exit button etc. With the latest face identification algorithm and streamlined technology, it can hold 800 face templates without dividing into groups. Communicating via WIFI, TCP/IP, and USB client/host, it ensures a smooth connection and data transfer. Amazing verification speed and intuitive operation process make it popular. Elaborately designed and finely processed, it matches your slap-up office perfectly.

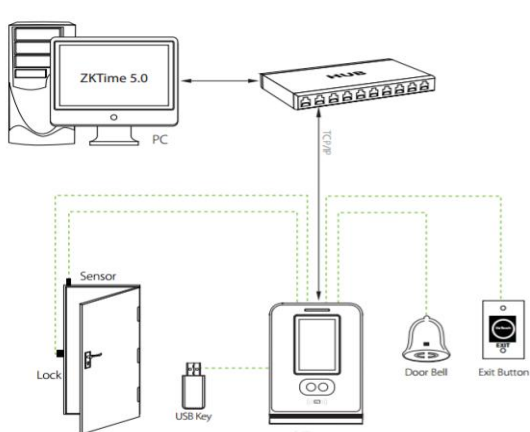
Features

- 3" TFT color display Screen.
- Intuitive and stunning UI.
- Elegant ergonomic design; Easy installation.
- Simpler, better, and more logical.
- Stores up to 400 face, 10,000 cards and 100,000 records.
- Faster matching speed: less than 1 second.
- Support user validity settings.
- Support data backup and retrieve.
- Optional Mifare card module.
- Infra-red optical system enables user-identification in a wide range of light environments.

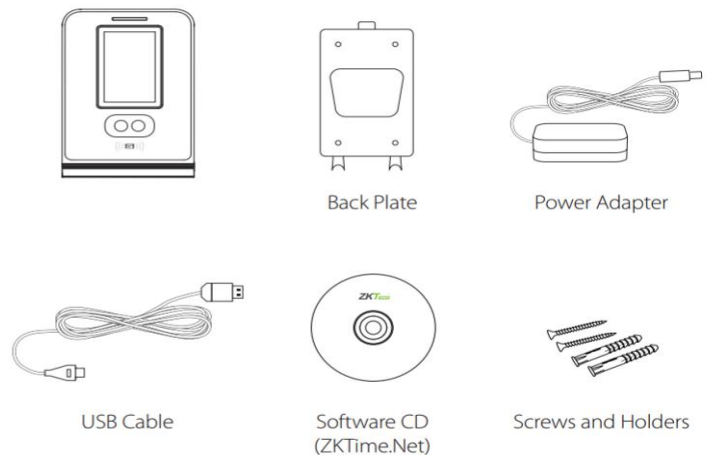
Specifications

Face Capacity	400
ID Card Capacity	10,000
Transaction Capacity	100,000
Communication	TCP/IP, USB (host and client)
Support Card Type	125KHZ EM card/ 13.56MHZ Mifare card
Hardware Platform	ZEM560
Display	3-inch Screen
Standard Functions	Short Message, Automatic Status Switch, Self-Service Query,T9 input, 9 Digits User ID, DST, Schedule Bell
Access Functions	3rd Party Electric Lock, Door Sensor, and Exit Button, Multiple Verify Mode
Optional Functions	ID/Mifare Card
Power Supply	DC 12V 1.5A
Operating Temperature	0°C ~ 45°C
Operating Humidity	20% ~ 80%
Dimension(L×W×H)	104.7 × 160 × 36 mm (L × H × D)
Gross Weight	0.8Kg

Configuration



What's in the Box



XIMITECH
 XIMITECH,F1004, Tiogong Security
 Minzhi Street,Longhua District
 Shenzhen,Guangdong,China
 Tel:86 755 61902989
 Email:sales@ximitechnology.com
 Skype: vicky.wen111
 Web: www.ximitechnology.com
 www.ximitech.en.alibaba.com

© Copyright 2016. XIMITech Inc. XIMITeco Logo is a registered trademark of XIMITeco or a related company. All other product and company names mentioned are used for identification purposes only and may be the trademarks of their respective owners. All specifications are subject to change without notice. All rights reserved

