

# iFace 302

## Multi-biometric Identification Time Attendance and Access Control Terminal



iFace302 multi-biometric identification time attendance and access control terminal adopts ZKTeco's latest platform with ZKFace algorithm and large capacity memory. With the upgraded hardware, it can now store up to 1200 face templates.

It Integrated with 800MHz high speed ZK Multi-Bio processor and high definition infrared camera enables user identification in the dark environment. Face and fingerprint multi-biometric identification methods make it more applicable. Multi-model communications consisting of RS232/485, TCP/IP and Wi-Fi/GPRS (optional) allow an extremely easy data management. Optional built-in 2000 mAh battery eliminates the trouble of power failure.

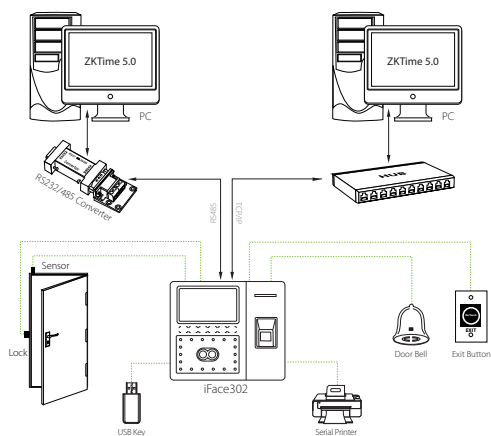
### Feature

- Identification methods include Face, Fingerprint/RFID and/or Password
- Elegant ergonomic design
- 4.3" TFT touch screen is user-friendly and very intuitive
- 6 user-defined function keys
- Contact relays for door access control (wires to door strike or 3rd party panel)
- Web server management software via IE browser.
- Optional extendable scheduled-bell
- Infra-red optical system enables user-identification in poorly lit environments
- Optional built-in battery backup provides approx 4 hours continuous operation
- Optional built-in wireless Wi-Fi or GPRS for wireless communication
- Built-in contacts for 3rd party electric lock, door sensor, alarm, exit button, or bell
- Wiegand Output for connections to 3rd party access control panels

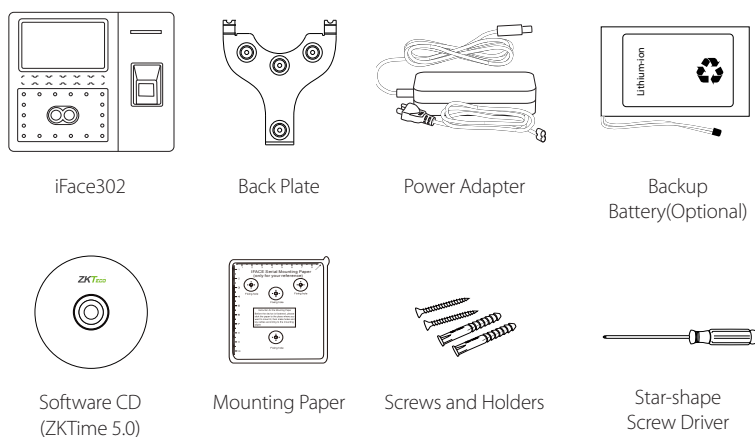
# Specifications

Display	4.3" TFT touch screenFace 1200 (1:N)
Face capacity	1200 (1:N)
Fingerprint capacity	2000
ID Card capacity	10,000
Logs capacity	100,000
Algorithm Version	ZK Face 7.0 & ZK Finger 10.0
2000mAh backup battery	Optional
Communication	TCP/IP,RS232/485
USB-HOST	Two USB-Host
Wireless Wi-Fi	Optional
Time attendance Standard functions	ID Card(Optional), Automatic Status Switch, Self-Service Query, Work Code, T9 input, 9 digit user ID, DLST
Access control interfaces for	3rd party electric lock, door sensor, exit button
Wiegand Signal	Output
Optional functions	Serial printer, Mifare card, Extendable Scheduled-bell, Short Message, Web-server, GPRS
Power supply	12VDC 3A
Verification Speed	≤2 sec
Operating temp	0 °C- 45 °C
Operating Humidity	20%-80%
Dimension(W×H×D)	193.6×146.8×111 mm
Gross Weight	1.9 kg

## Configuration



## What's in the Box



ZKTeco Inc.  
 ZK Mansion, Wuhe Rd, Gangtuo, Bantian, Buji Town,  
 Longgang District, Shenzhen China 518129  
 Tel: 86-755-8960 2345/46/47/48  
 E-mail: sales@zkteco.com  
 www.zkteco.com

Global Offices:  
 USA: +1 732-412-6007  
 EU: +34 916532891  
 Brazil: +55 31 2515-8326  
 Thailand: +66-027199154  
 Mexico: +52-55-52928418

South Africa: +27 12 259 1047  
 Egypt: +201110444134  
 Dubai: +971 4 6091 310  
 India: +91 8123536788  
 Indonesia: +62 21 2921 8949

Vietnam : +84-0169-5813007  
 Philippines: +63 9084118832  
 Russia: +8 915 178-46-81