

# FINGERPRINT XIMI TECH TECHNOLOGY

High performance with full SDK

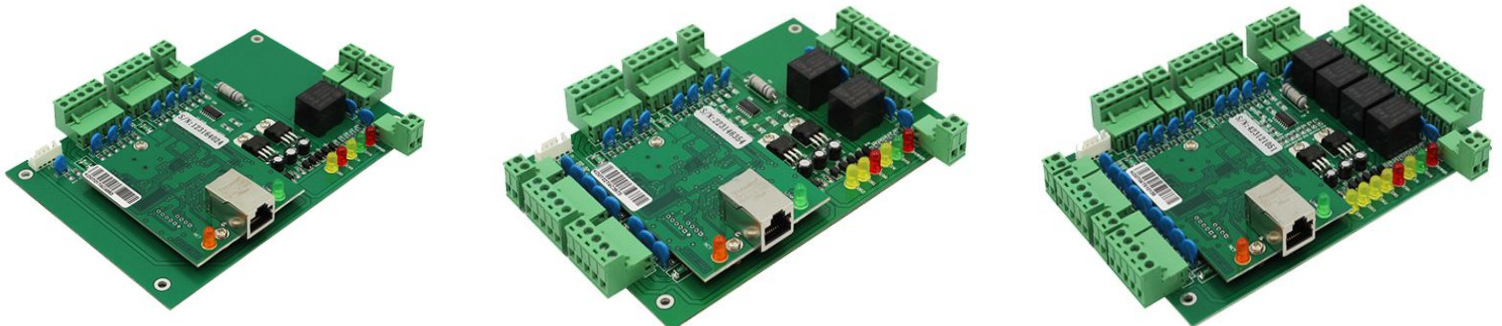


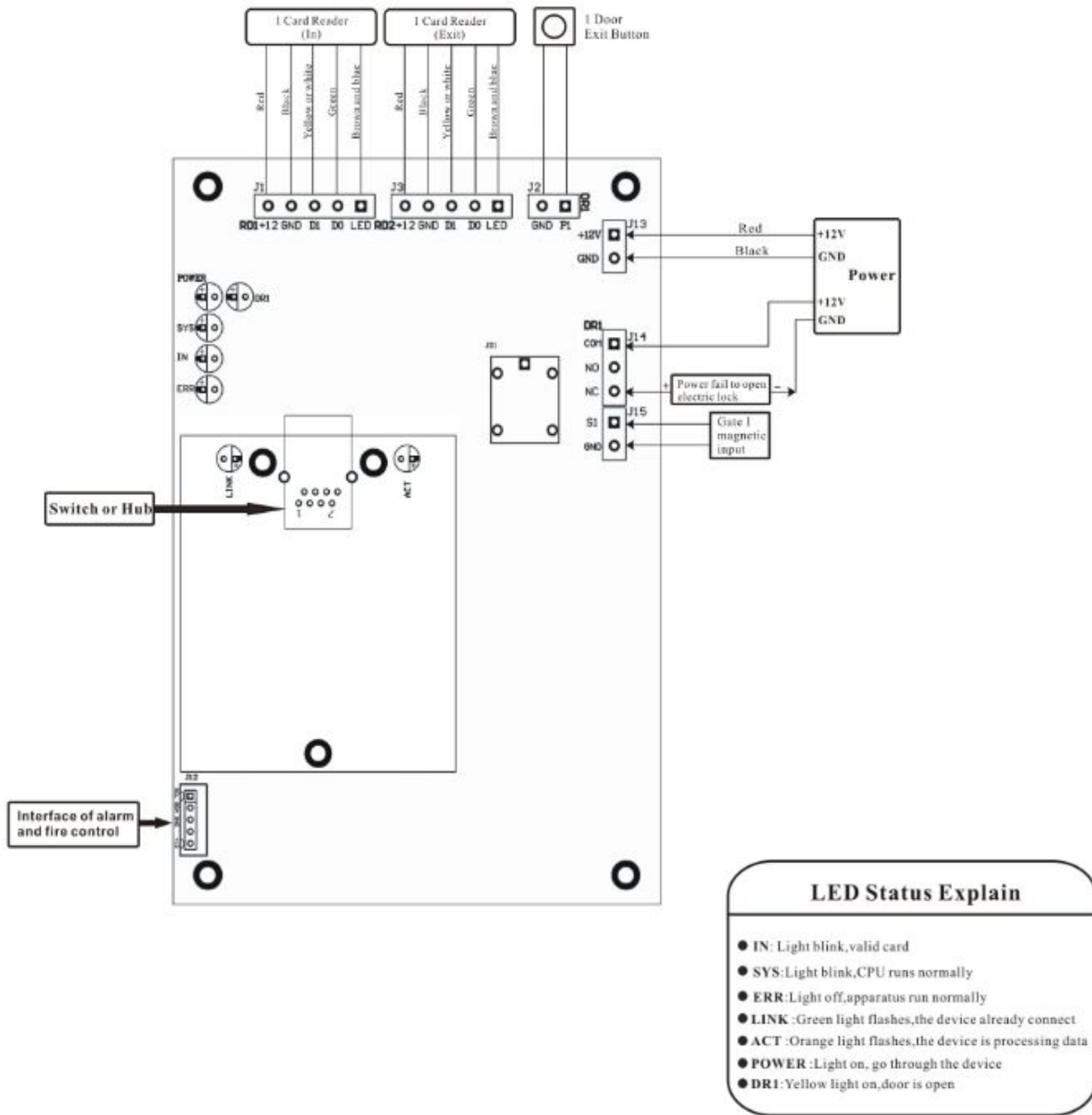
## Hardware:

1. Support 2 door--Door with four readers and two push button interface.
2. With door sensor for door
3. Relay output for use with Normally Open and/or Normally Closed type locks.
4. Can Operate off-line and real-time monitoring.
5. 100,000 events can be stored.(off-line), Can store unlimited events to PC.
6. 40,000 users can be registered.
7. Network communication using TCP/IP 10M/100M adaptive.
8. Expandable to use unlimited number of controllers.

## Specifacations

1. Support ACCESS & SQL database.
2. Offline Operation.
3. Real-time Supervision.
4. Photo Display.
5. Mass Storage.
6. Flexible user privilege setup.
7. Remote Unlocking.
8. Multi-user supervision.
9. Simply checking and query
10. Revisable and printable report form.
11. Report can be exported to EXCEL file.
12. Card+password unlocking.
13. Alarm door left open (reQUIRES door sensors)
14. Alarm for invalid card swiping.
15. First card unlocking.
16. Alarm for illegal break in.
17. Unlocking at specified time.
18. Integrated fire control.
19. Anti-passback & anti-tail.
20. Interlocking.( Only available for 2-door controller and 4-door controller)
21. Multi-card unlocking.
22. Emergency double locking.
23. In door population checking.
24. Unlocking based on internal and external validation.
25. Normal shift and multi-shifts time attendance management system.
26. Fixed ration dining management system.
27. Meeting attendance management system.
28. Online Patrol management system
29. Security Alarm management system.





XIMITECH  
 XIMITECH, Floor 7, Niulanqian Building,  
 Minzhi Street, Longhua Town, Baoan  
 District, Shenzhen, Guangdong, China  
 Tel: 86 138 2359 4450  
 Email: sale01@ximitechnology.com  
 Skype: vicky.wen111  
 Web: www.ximitechnology.com  
 www.ximitech.en.alibaba.com



Vicky Wen



vicky.wen111



0086-138-2359-4450



sale01@ximitechnology.com

